

GOVERNMENT OF MEGHALAYA
OFFICE OF THE COMMISSIONER OF TAXES, ETC.,
MEGHALAYA, SHILLONG.

Short Notice Inviting Quotation.

Dated Shillong, the 24th August, 2021.

No.CTA-44/2020/ 228, / Sealed quotation affixing non-refundable court fee stamp of Rs. 25/- (Rupees twenty five) only are invited from the interested firm for supply and installation of LAN Connectivity in the office of the Superintendent of Taxes, Khliehriat, East Jaintia Hills. The quotation in two envelopes (1) Technical Bid and (2) Financial Bid along with all the required documents must reach the office of the undersigned on or before 24.9.2021 at 3:00 P.M. The quotation (technical bid) will be opened at 3:30 P.M. on the same day in presence of the quotationer(s) or their authorized representative(s) if any.

Detailed requirement, specifications and other terms & conditions are available on the Department website meggst.gov.in or may be had from the office of the Commissioner of Taxes, Lower Lachumiere, Shillong on any working day during office hours before the 23.9. 2021.

(L.Khongsit)

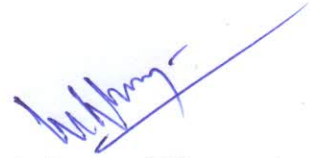
Addl. Commissioner of Taxes, etc.,
Meghalaya, Shillong.

Memo No.CTA-44/2020/228-A

Dated Shillong, the 24th August, 2021

Copy to :-

- 1) The Director, Information & Public Relation, Meghalaya, Shillong for information with a request to publish this NIQ in local & English Daily.
- 2) The Deputy Director General & SIO, NIC, Meghalaya for favour of information.
- 3) The Under Secretary to the Government of Meghalaya, ERTS Department for information.
- 4) Programme Assistant. She is requested to upload this quotation notice in the website of the Department.
- 5) Office Notice Board.


Addl Commissioner of Taxes, etc.,
Meghalaya, Shillong

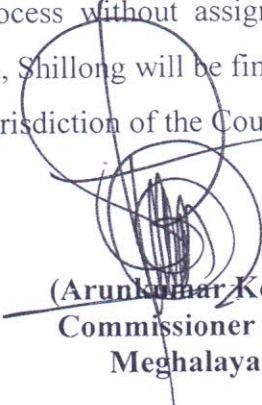
Annexure – A

List of item, specification and quantity for LAN Connectivity in the Office of the Superintendent of Taxes, Khliehriat.

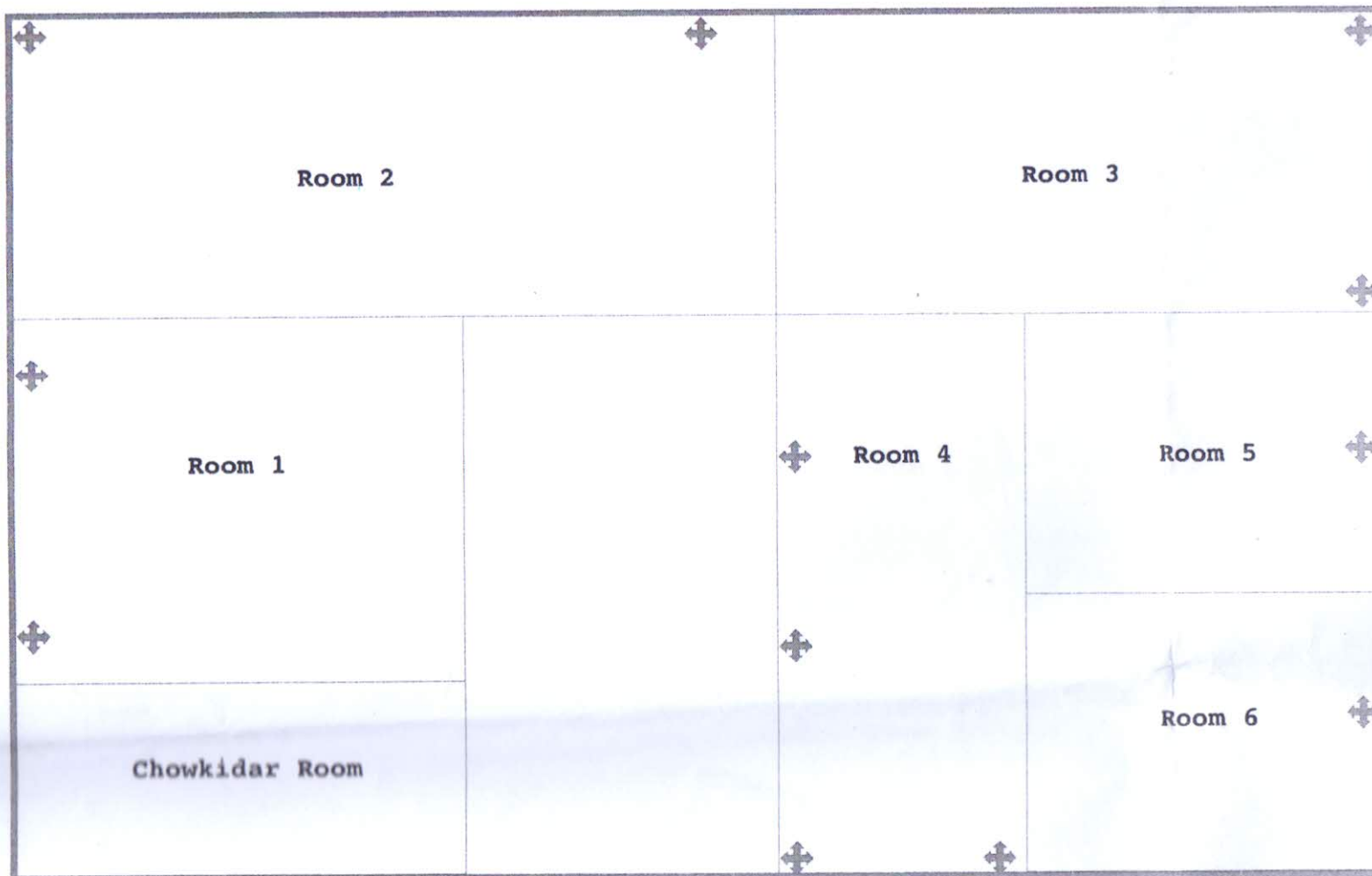
A. Supply (active Component)						
Sl.No.	Equipment	Unit	Qty.	Rate	Amount	Remarks
1.	CISCO Router 4321/K9 with 1 year warranty	Nos	1			
2.	CISCO SG-350, 24x10/100/1000Base- 2T, 2xGig Ethernet with 2xSFP port manageable Switch with 1 year warranty	Nos	1			
	Total (Rs)					
B. Supply (Passive component (UTP))						
Sl.No.	Equipment	Unit	Quantity			
1.	12U Rack with all the accessories	Nos	1			
2.	Wire manager (CAT6A)	Nos	1			
3.	24 Port, Cat 6 Jack Panel (Loaded with UTP I/O)	Nos	1			
4.	Cat 6 Cable (305 mtr per box)	Box	2			
5.	I/O Box (Single SMB)	Nos	23			
6.	UTP Patch Cord- 1 mtr (CaT 6)	Mtr	23			
7.	UTP Patch cord – 3 mtr (Cat 6)	Mtr	23			
8.	Supply of 25*25 MM PVC Duct	Mtr	220			
9.	Supply of 25 MM PVC Conduit pipe	Mtr	80			
10.	Labels for Jackpanel/ Face Plate/Patch cords (set of 100)	Set	1			
	Total (Rs.)					
C. Installation (Passive component) (UTP)						
Sl.No.	Equipment	Unit	Quantity			
1.	Installation of 12U rack	Nos	1			
2.	Installation & Termination of UTP cables on Patch Panel CATs with wire manager	Nos	23			
3.	Installation of 25*25 MM PVC Duct	Mtr	220			
4.	Installation of 25 MM PVC Conduit	Mtr	80			
5.	In-Building Laying CAT6 UTP Cable (per mtr)	Nos	610			
6.	Installation & Termination of Information outlets (including termination of CAT6 Cable on IO)	Nos	23			
7.	Performance Testing of laid UTP Nodes (penta scan)	Nos	23			
	Total (Rs.)					
D. SUPPLY (Hardware)						
Sl.No.	Equipment	Unit	Quantity			
1.	1.0 KVA UPS (IGBT-PWM with inbuilt isolation transformer Input Power : Single phase 160V-260V sinewave, 50Hz) with 30-min battery backup with 2 year warranty on UPS	Nos	1			
	Total (Rs.)					
	GRAND TOTAL (Rs.) A+B+C+D)					

Terms & Conditions

1. Quotation must be in sealed envelope superscribed "QUOTATION FOR SUPPLY AND INSTALLATION OF LAN CONNECTIVITY" along with a forwarding letter under the letter head of the firm duly signed by the Proprietor or their authorized representative.
2. Quotation must be submitted into 2(two) parts : (1) Technical Bid and (2) Financial Bid.
3. The Firm(s) should be registered with Government of Meghalaya/Central Government.
4. Rates must be quoted per Unit as per the specified items. Taxes shall be charged extra as applicable.
5. Firm(s) should submit the valid documents like GST registration, professional Tax Certificate, Trading license in case of non-tribal along with the quotation.
6. No overwriting or cutting is permitted in the quoted rate. If found, the quotation shall be summarily rejected. However, except rate, all cuttings and over writing must be signed by the proprietor or the authorized person of the firm. The rates quoted should remain valid for a period of 6(six) months.
7. The supply shall be awarded to the selected firm subject to the approval of the Government.
8. The supply and installation of the materials should be completed within 21(twenty one) days after the issue of supply order.
9. The Commissioner of Taxes, Meghalaya, Shillong reserve the right to reject any quotation in part or the whole, including cancelling the tender process without assigning any reason thereof. Decision of the Commissioner of Taxes, Meghalaya, Shillong will be final in this regard.
10. Any dispute in the matter shall be confined to the jurisdiction of the Courts at Shillong.


(Arun Kumar Kembhavi, IAS)
Commissioner of Taxes, etc.,
Meghalaya, Shillong.

LOCAL AREA NETWORK AT THE
 Superintendent of Taxes, East Jaintia Hills
 Khliehriat



SECOND FLOOR

INDEX

✚ - I/O Node

Total No.of Router	- Nil
Total No.of L2 24 Port Switch	- Nil
Total No. of I/O nodes	- 12

127

